

# إسهام القطاع الخاص في تمويل التعليم العام

بالمملكة العربية السعودية

إعداد الطالب /

فهد بن عباس العتيبي

إشراف

الأستاذ الدكتور / فهد بن إبراهيم الحبيب

بِسْمِ اللَّهِ الرَّحْمَنِ الرَّحِيمِ  
بِسْمِ اللَّهِ الرَّحْمَنِ الرَّحِيمِ  
بِسْمِ اللَّهِ الرَّحْمَنِ الرَّحِيمِ  
بِسْمِ اللَّهِ الرَّحْمَنِ الرَّحِيمِ

( )

/

:

.

.

.

.

.

.

)

(

:

:

:

■

■

■

■

■

■

■

■

■

:

:

:

:

:

■

■

■

■

■

■

■

■

■

■

■

■

■

■

■



## Summary

Financing education has been preoccupying the minds of educators, economists and politicians in most modern societies due to the everlasting expansion in the number of students. The educational institutions try to develop and diversify their policies and regulations to keep up with the changes and achieve the ambitions of their societies. Education in itself pressures governments that are unable to finance the educational process. Accordingly, there have been calls around the world for finding alternative and ancillary sources for financing education. One of such alternatives is the private sector that enjoys the financial and administrative capabilities.

The present study intended to identify the private sector's contribution in financing education in the Kingdom of Saudi Arabia. Thus it presented areas of contribution and barriers facing them as seen by peoples in charge of public and private education in Riyadh. It also presented the views that may culminate the private sector's finance of education.

The researcher used the descriptive survey to define the views of peoples in charge of education. He distributed a questionnaire onto (392) peoples in charge of public and private education during 1423/ 1424. The questionnaire included the following areas:

- 1- The private sector's finance of public education.
- 2- The private sector's financing areas of public education.
- 3- The barriers facing the private sector's finance of public education.
- 4- Suggestions of peoples in charge to increase the private sector's finance of public education.

The researcher used a fivefold scale to measure the areas of this study (i.e, contribution, areas of contribution, its barriers, suggestions of peoples in charge). He also used the appropriate statistical analyses that assist in answering the study questions. The results of this study revealed the following:

1- According to the peoples in charge of public and private education, the private sector's contribution in financing public education is generally poor. The major areas which the private sector finances, as seen by the peoples in charge of public education, are the following:

- Encouragement gifts
- Printing educational pamphlets

- Constructing educational buildings

However, peoples in charge of the private sector gave the following areas more importance:

- Training the students
- Giving money gifts
- Giving prizes

2- Peoples in charge of public education believe that there is a high possibility for the private sector to contribute in financing areas of public education. However, peoples in charge of the private sector do not agree. Peoples in charge of public education believe that among the major areas the private sector can contribute are the following:

- Giving prizes
- Printing educational pamphlets
- Providing educational equipment

However, peoples in charge of the private sector believe that the following areas are more important than others in terms of the private sector's financing:

- Training the students.
- Giving prizes and gifts
- Giving money gifts

3- Peoples in charge of public and private education give attention to the barriers preventing the private sector's financing of public education. The following barriers received high focus from the peoples in charge of public education:

- The peoples in charge of public education do not care about the potentials of the private sector.
- The insufficiency of laws and regulations concerning the private sector's financing of public education.
- The ambiguous role of the private sector in the light of the development plans.

Peoples in charge of the private sector see the following barriers as more important:

- The weak relationship between administrations of the public and the private sectors
- The absence of coordination among the two sectors



- The ambiguous role of the private sector in the light of the development plans
- 5- The subjects of this study suggested the following to increase the private sector's finance of public education:

Peoples in charge of public education believe in:

- The development of laws, financial and administrative procedures in the educational sector
- Connecting the private sector's needs with education programs
- Forming joint committees between the sectors

Peoples in charge of the private sector suggest the following:

- Connecting the public sector's needs with the private sector's education programs.
- Developing laws, financial and administrative procedures in the educational sector.
- Forming a high education council from representatives of the private sector

In the light of the preceding results, this study presented an overview for increasing the private sector's contribution in financing public education. This contribution comes in four phases: making the designs, applications, communication and evaluation.

الإهداء

إلى :

والديّ رحمهما الله رحمة واسعة واسكنهما فسيح جناته

وإلى

زوجتي وأبنائي يزيد وعبدالله وفارس وغادة

أهدى لكم هذا الجهد المتواضع الذي لم يكن ليتحقق لولا

توفيق الله ثم دعاؤكم ومساندكم وصبركم

# شكر وتقدير

.

.

/

.

:

.

/

.

/

.

.

-	:
	-
	-
	-
	-
	-
	-
	-
	-
	-
-	:
	:
	:
	-
	-
	-

		-
		-
		-
		-
		-
		-
		-
		-
		-
		- -
		- -
		- -
		- -
		- -
		-
-	:	:
		-
		-
		-
		-
		-
		-
		-
		-
	:	-
		-





-	:
-	.
	-
	-
	.
	-
	.
	.
	-
	.
	-
	.
	-
	.
	-
	.
	)
	(



-	:









: -

.

.( )

.( - )

.( )

( )

:

:

:

.

( )

.(

)

.(

)

:

.

-

, )

( )

.(

(  
)

( , )

( )

:

( )

.( )

.( ) /

.( ) ( )

"

.( )" "

)

.(

" .( )



"

.

:

/

■

■

■

:

// ( )

.

"

// ( )

.

.(

"

.

"

.

.

.

.

.

-

:

.

.

.

.

.

.

.

.

.

.

.

-

:

■

.

( )

( , )

■

■

■

·

-

:

·

·

·

·

·

(

)

:

-

:

■

.

:

■

.

:

■

./

:

-

:

■

( )

( )

( )

.( - )

.

:

■

"

)"

.(

.

:

■

)

.(

.

:

■

(

)

.

:

■

.



.

•

•

.( )

.( )

.

.

:

-

.

.

.( )



.( )

"

.( )" .

( )

.( )

:

-

)

:( ) ( ) (

:

-

:

■

■

■

■

■

■

■

■

■

■

■

■

—

■

■

■

■

■

.

:

-

.( )

.

.

.

)

.(

"

.

.( )"

:

:

-

.

.

:( )

■

.

■

.

.

.( )

:

-

:( )

■

.

■

.

■

.

■

.

■

.( )

.

:

-

.

.

.

.( )

: -

.

:

: -

.

( )

( )

.( )



.

)

.(

:

.

.

.

.

.

.

)

:(

.

■

■

.

■

.

:(

)

.

.

.

.

· ·

## Educational Vouchers

· ( - )

·

· -

·

:

- -

.

.

.( - )

.( )

:

- -

:

■

.

.( )

:

■

.

.( )

:

- -

:( )

.

.

.

.

.

.

.

.

:

- -

.

.

)

: (

.

.

.

.

.

.

.

.

:

--

.

.( )

:( )

.

-

.

-

.

-

.( )

.

⋮

-

:( )

⋮

-

.

⋮

-

⋮

( )

■

■

( )

:

-

:

-



“ ”

( )

:( )

. .  
. .  
. .

:( - )

. .  
. .  
. .  
. .

. .  
. .

( )

:  
. .  
. .

.



•

•

.

•

-

.

:( Lumsden, Hertling:2002)

■

.

■

.

■

.

.(Lumsden, Hertling:2002)

:( Moursand: 2002)





.( )

:

-

: (Lumsden, Hertling:2000) ( Moursand: 2002)

:

-

■

( school to work )

■

■

■

■

■

-

■

■

■

■

■



:

-

■

.

■

.

■

.

■

.

■

.

:

-

■

.

■

.

■

■

.

)

:(

■

■

■

■

:

-

)

:(

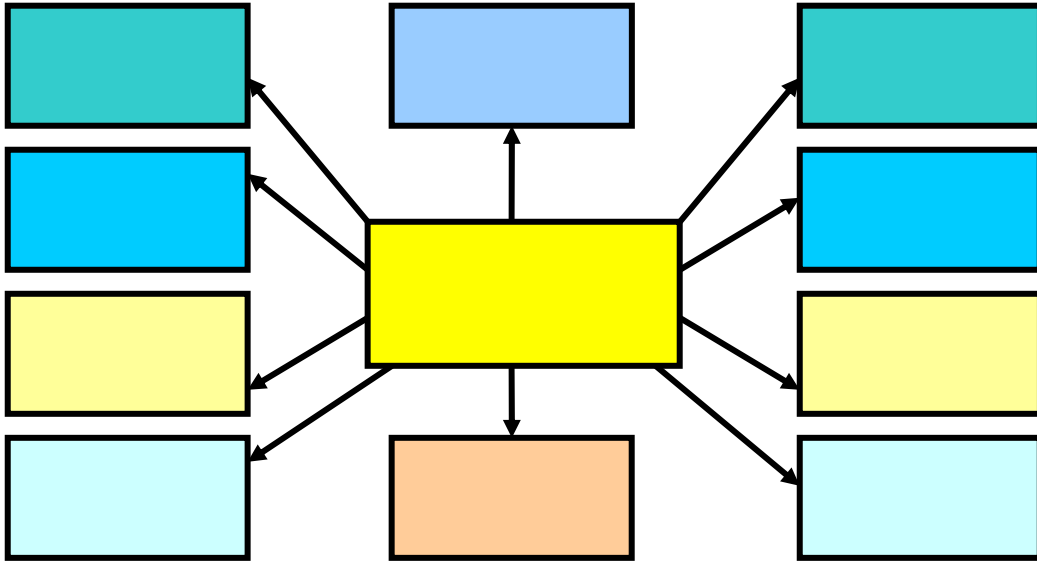
■

■

■

:

( )



( )

:

:

-

:( - )



.(Shaul, 2000, 28-29)

: -

: (Molnar, Morales, 2000,18-23)

: **Channel One** ■

( ) ( )

) ( Molner)  
( Fox ) ( ,

(Fox:1995)

( )  
(Johnston: 1995)

: **Zap me** ■

“ ”

.

:

-

. ( )

( )

. ( clark, 2002,44 )

Charter Edison schools )

( schools

.

.( Hernandez and Mahoney: 2002)

:

-

:

■

.

■

.

■

(Moursund:2002 )

( )

.

:

-

( )

( Book it )

( )

. (Molnar, Morales, 2000,11) /

Adopt-a- school: -

.( Clark, 2002, 45)

: -



.

( )

( )

.( Clark,2002,45)

:

-

.( Clark, 2002, 45)

:

-

:

.(Shaul, 2000, 29)

school to )

( work

.

:

-

.(Aidman,1995,1-2)

(Jams McNeal)

.(ACAD,1998,2)

( Giroux, 1998, 17)

.(Aidman, 1995,2)

: ( ACAD, 1998,1)

PAT

:( Weisman, 1991,2-3)

.( ACAD:1998,6)

.( Aidman, 1995,3)

⋮

⋮

⋮

—

.

⋮

⋮

—

( )

/

( )

	,	,	,	,	,	/
	,	,	,	,	,	/
,	,	,	,	,	,	/
,	,	,	,	,	,	/
,	,	,	,	,	,	/
,	,	,	,	,	,	/
,	,	,	,	,	,	/
,	,	,	,	,	,	/
,	,	,	,	,	,	/
	,	,	,	,	,	* /
,	,	,	,	,	,	* /

/

\*

:

( )

( , )

/

( )

( )

.

/

/

( )

/

( , )

( )

( )

.

/

( , )

( )

/

( , )

.

( )

( )

: .  
( )  
( )

	/
	/
	/
	/
	/
	/

:  
:  
-  
.  
( )  
.  
/





( )  
 ( ) / ( )  
 ( ) / ( )  
 ( ) ( )  
 ( ) ( )  
 ( ) / ( )  
 ( ) ( )  
 ) / ( ) ( )  
 ) ( , ) ( , )  
 .(

( ) ( )  
 .( )  
 ) ( ) ( )  
 ( ) ( )  
 ( ) ( )  
 .( - ) ( )



( )

( ) / ( )

( ) . /

/ ( ) /

( ) ( )

( )

. / ( )

( ) ( )

( ) /

. ( )

.

•

-

•

-

•  
"

( )

"

•  
( ) ( )

( , )

• ( )



)

( , )

( ,

.

( )

( )

.( )

( )

( )

( )

( )

:

:

.

:

∴

( )

( )

( )

( , )

, )

( , )

(

( , )

.( )

( )

( )

,	,		,	,		
,	,	,	,	,		
,	,	,	,	,		
,	,	,	,	,		
		,		,		

-

∴

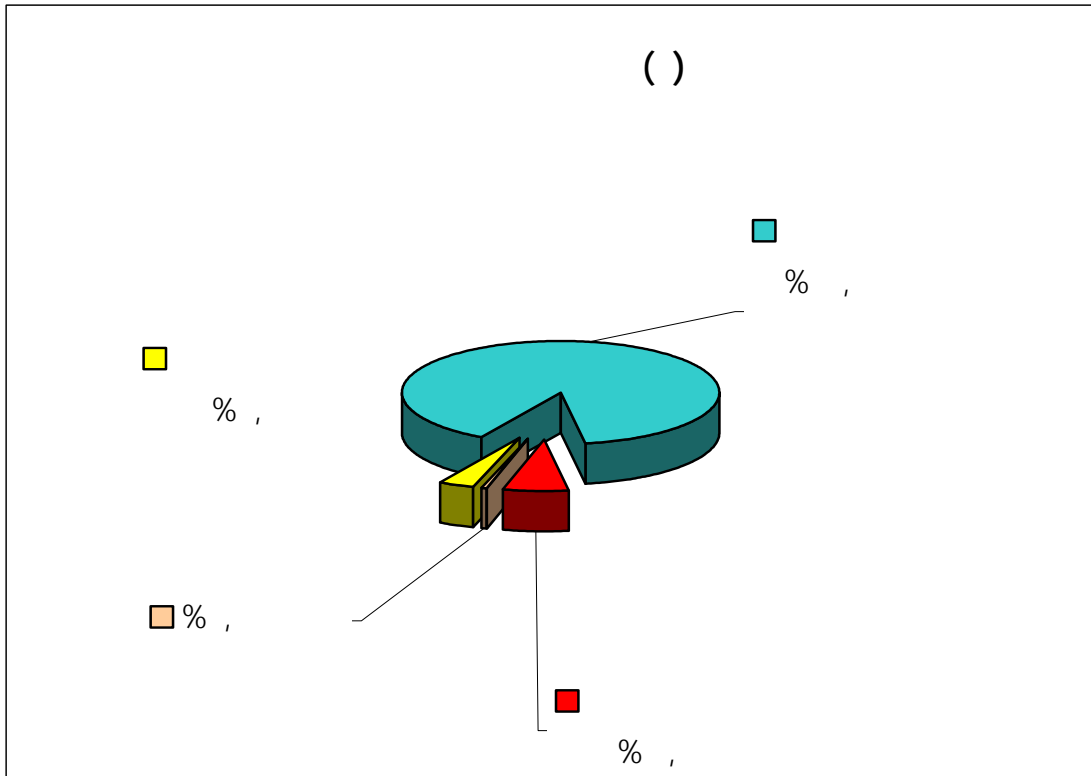


) ( / )  
 / ( : ( )

/ ( )

'	'	' '	'	' '		
'	'	' '	'	' '		
'	'	'	'	'		
'	'	'	'	' '		
		' '		' '		

/ :



( , )

( , )

( , )

.( , )

-

:

:

--

( )

( )

( )

)

( )

( )

( ,

.

:

"

■

"

.

"

■

"

.

( )  
( )  
) ( ) ( )  
. (

( )  
( )


:

⋮      - -

//

⋮

.

.

.

.

.

.

.

.

.

.

⋮

⋮

.

.

.

.

.

.

.

.

.

.

⋮

⋮

- -

( , )

// ( )

.

( )

( )

//

:

■  
■  
■  
■

.

.

.

.

.( )

/

( )

.(

)

( )

:

- -

//

( )

.

/ -

.(

)

( )

:(

)

.

■

■

.

: - -

.

// ( )

.

.

:

- -

( )

.

: - -

. // /

:

:

■

.

.

:

■



.

.

( )

■

// /

)

)

(

(

"

"

/

.(

)

:

■

.

:

- -

.

)

.(

:

- -

( )

.( )

. ( ) ( )

( )

./

⋮

— —

⋮

⋮

■

“

”

“

”

.

⋮

■

.

.

∴ ■

.

.

.

∴

--

.

∴

--

/

//

∴

.....

.( )

:

--

:

■

:( )

.

.

.

.

.

.

.

.

.

:

■

)

:(

.

.

.

.

.

.

.

.

.

.

( )

.

:

.

.

.

.

■

■

■

■

( )

( )

( )

)

( -



:( - )

( ) ( )  
.( )

( ) ( )  
.( - ) ( - )

:( )

)

( )

:( -

( )

)

:(

( )

( )

)

/

:( )

/

( -

/

( )

,			
,			
,			
,			
,			

( )

( )

( )

( , )

.

:

-

)

(

.

.

( ) (latham)

:

.

.

.

.

.

.

.

.

:( )

.

.

.

.

.

.

.

.

.

.

.

.





."

"

:

)

:(

:( -

)



( - )





:

:

-

:

)

:(

:

.

.

.

( )

( )

( )

:

( )

.

( )

.

.

.

.

.

.

.

.

.

.

.

.

.

.

.

.

:

.

:

:

:

.

.

:

:

—

:

■

.

■

■  
■

.

·  
·

.

·  
·

.

.

.

•

•

•

•

•

•

•

•

•

•

•

•

•

•

•

•

•



( )

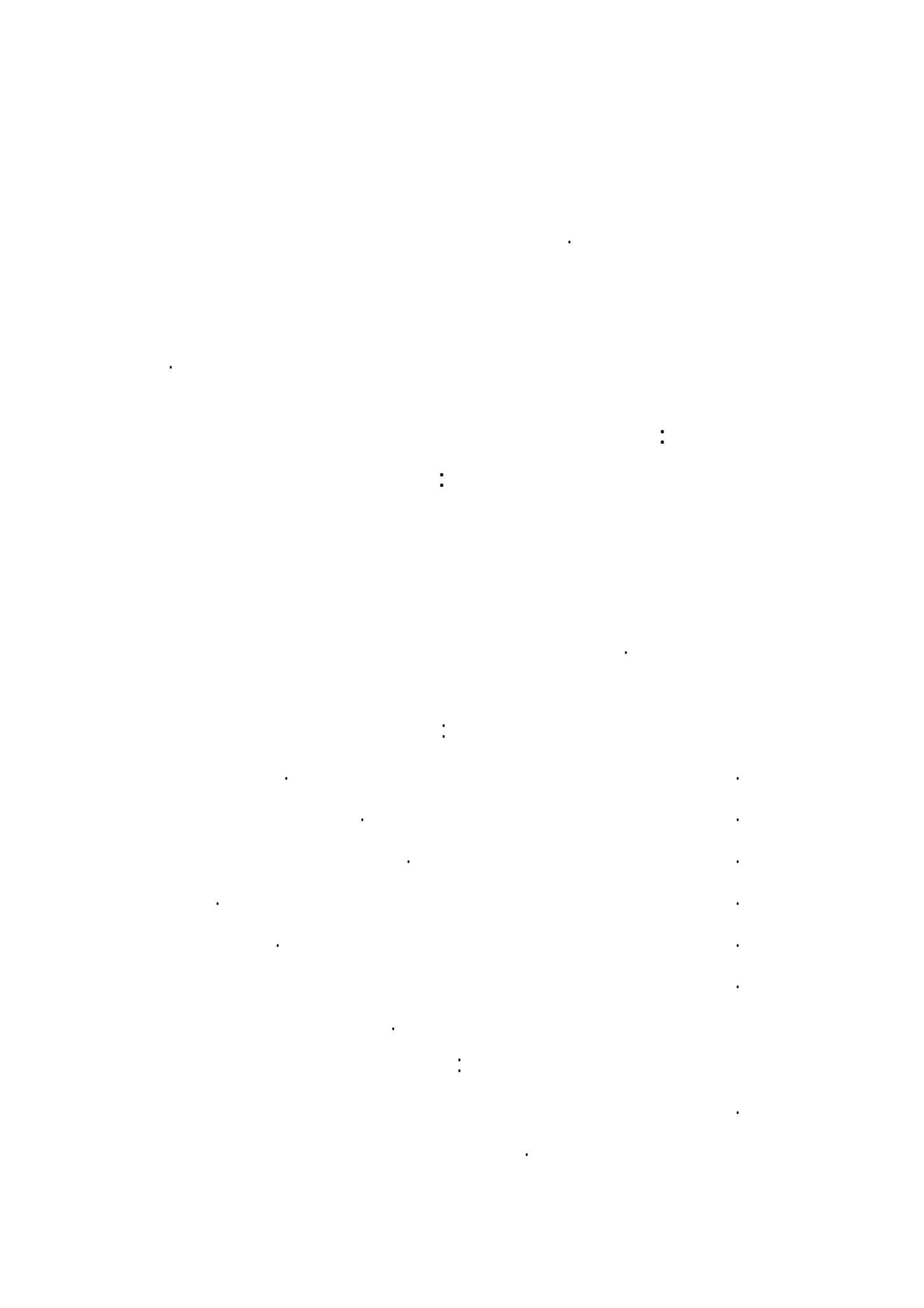
:

( )

( )

:

:





:

.

.

.

.

:

( )                      ( ) ( )

)

(

:

.

:

.

.

:

:

:

(Latham)

.

.

:

■

■

■

■

■

■

•

•

||

•

•

•

■

■

■

•

•

•

•

•

•

.

.

.

.

.

.

.

.

.

.

■

■

■

■

■

■

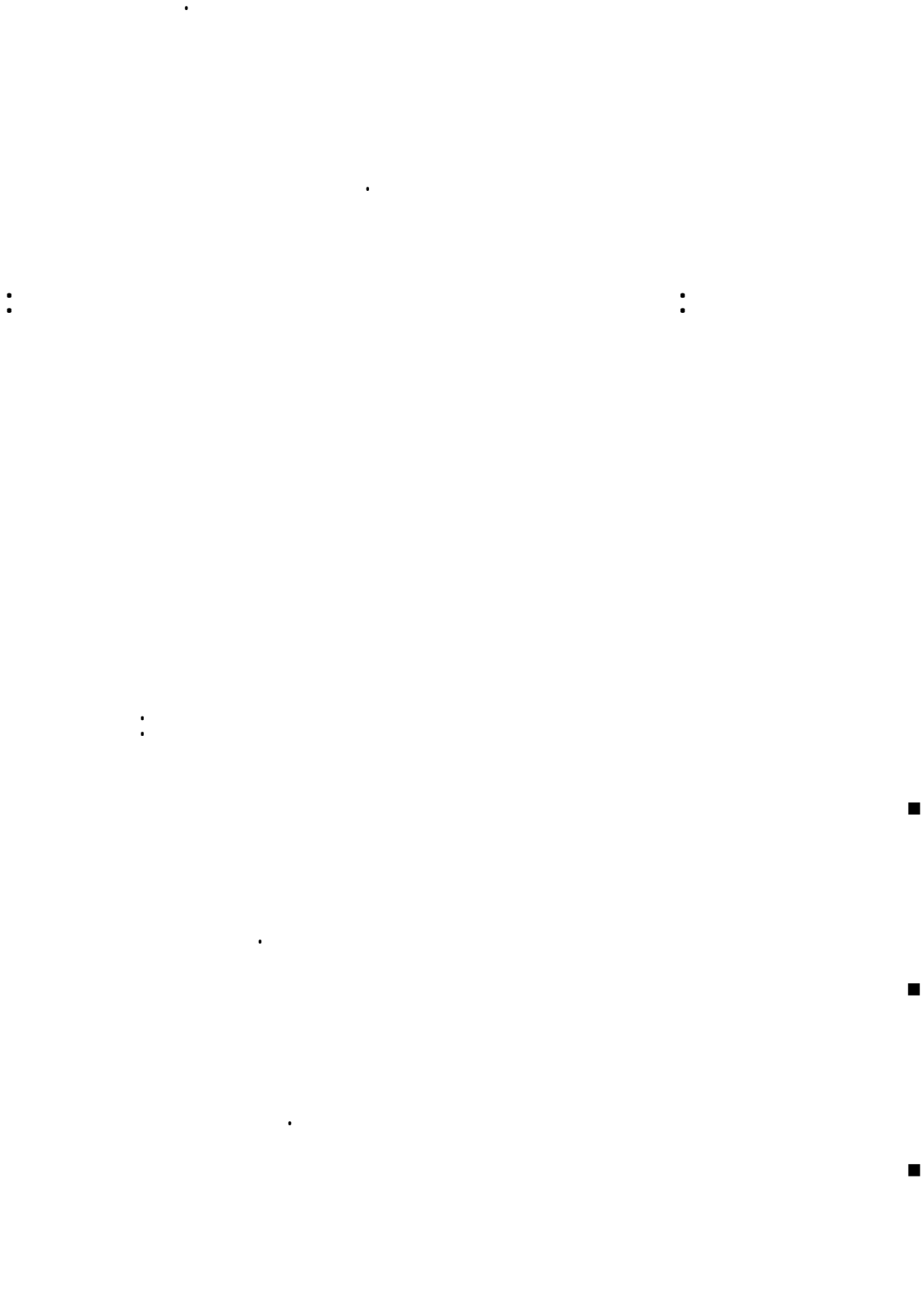
.

.

.

.

.





■

.

:

.

:

:

.

.

:

:

)

.(

( )

( )

:

:

.

.

:

.



⋮

⋮

⋮

⋮

⋮

⋮

( )

( )

⋮

⋮





•  
•

•

•  
•

•

•

•

•

•

•

•

•

•

•  
•

•

•

•

•

•

•

•

•

•

•

•

•

.

.

.

.

.

.

.

.

⋮

⋮

.

.

( )

:



( )

.

.

:

:

.

.

.

.

.

.

.

.

.

.

.

.

.

.

:

:

.

: -

Partnership 2000, A

:

Decade of Growth and Change  
(Mernda)

( )

( )

( ) ( )

:

.

.

.

.

.

.

.

.

:

.

.

, ) ( )  
( , ) ( )  
: ( )  
( ) ( ) ( )  
:  
( )  
( ) ( )  
:

:Commercial Activities in School

:

( Shaul )

( )

:

■

.

■

.

■

.

.

:

A public secondary school model to access

private- sector funding  
(Clark )



Components of selected public-private to  
partnerships build new schools in California  
( Clark )



:

-

:

.

( )

.Shaul

.

.

.

.

:



.( ( )

.

.

.

.

.

.

.

.

.

.

.

.

.

.

.

.

:

:

:

:

.

.

.

.

"

)"

.(

: :

:( )

( )


: :

: -

( )

( )

: -

:

.

Robert

:( Mason,1996,p.266 )

Mason

$$N \frac{M}{((S^2 \times (M - 1)) \div PQ) + 1}$$

:

: M

(1.96) ( 95)

:  $S^2$

.(0.05)

: P

.( 0.05)

: q

. (0.05)

:

$$N \frac{702}{\left[ \left( \frac{0.05}{1.96} \right)^2 \times (702 - 1) \div 0.25 \right] + 1} = 284$$

:( )

( )

=	=		

: .

( )


( )


( ) ( )

. ( ) ( ) ( )  
( ) ( )

.

:

.

:

-

( )


:

-

( )


( ) ( )

( )

-

:

( )


( ) ( )

)

.

(

:

-

( )


( )

( )



( )  
( )

( )

:

:

)

( ) (

:( , , )

■

■

■

■

:

( )

( )


:( )

( )


: ( )

( )

	,
	,
	,
	,
	,
	,

( )

( , )

( )

, )

( )

(

( )

( , ) ( , )

.

:

:

:

-

( )

.

( )



: -

( )

( )

( )

,	
,	
,	
,	

( , )

( )

( , )

.( , )

:

Alpha Cronbach

:( )

( )

,		
,		
,		

( )

( )

( )

( , )

( )

( , )

.

:

( )

/ /

.

.

//

:

:SPSS

.

.

.

.

Alpha Cronbach

.

.

T-test .

ANOVA .

.

.

.

.

:

:

:

-

:

( )

:





'	'								
'	'	'	'	'	'	'			
'	'								
'	'	'	'	'	'	'			
'	'								
'	'	'	'	'	'	'			
'									

( )

( , )

( , )

( , )

( )  
( )

:  
( , )

( , )

( , )

$( \quad )$   $( \quad , \quad )$  :  $\quad .$   
 $( \quad )$   $( \quad , \quad )$   
 $\quad .$   $( \quad , \quad )$   
 $( \quad , \quad )$  :  $\quad .$   
 $( \quad )$   $( \quad , \quad )$   
 $\quad .$   $( \quad , \quad )$

$\quad .$   
 $( \quad )$  :  $\quad .$   
 $)$   $( \quad , \quad )$   
 $\quad .$   $($   
 $( \quad )$  :  $\quad .$   
 $( \quad , \quad )$   $( \quad )$   $( \quad , \quad )$   
 $\quad .$   
 $( \quad )$  :  $\quad .$   
 $( \quad , \quad )$   $( \quad , \quad )$   $( \quad , \quad )$

$( \quad )$

$\quad .$



'	'								
'	'	'	'	'	'	'			
'	'	'	'	'	'	'			
'	'	'	'	'	'	'			
'	'	'	'	'	'	'			
'	'	'	'	'	'	'			
'	'	'	'	'	'	'			
							'		

( )

( , ) ( , )

( , )

.

:

( )

:

( )

( , )

( )

.

( , ) ( , ) ( ) : .  
( , ) ( , )

( ) ( ) : .  
( , )  
( )

( , ) ( ) : .

( , ) ( ) : .

( ) ( , )

.( )

" "

"

( )

"

(Shaul,2000)

( )

·  
"

"

" "

" "

·

·

"

" "

"

"

"

( )

( )

"

"

·

"

"

·



“ ”

“ ”

“ ”

“ ”

( ) ( )

( ) ( )





( )

( , )

( , )

( , )

.

:

( )

:

.

( )

( , )

( )

.

( , )

( , )

:

.

( , )

.

( , )

( )

:

.

( )

( , )

.

( )

:

( , )

( )

:

.

( )

.

( )





( )

( )

( , ) ( , )

:

( , )

:

( , )

.( , )

( , )

( )

:

( )

.( , )

( )

( )

:

( )

( )

.( , )

:

:

(% , )

( , )

(% , )

( , )

( , ) ( , ) : .  
 . ( ) ( , )  
( , ) ( , ) : .  
 . ( ) ( , )

( , ) ( )

( ) .

( )

.

)

.(  
( )



( )

"

" "

"

( )

"

"

.

"

" "

"

"

"

.

( )

.

( )

)

.

(

.

( ) ( )

// ( )

( )

( )

( )

"

"

)

(

" "

"

( )

"

.  
" " " "

.  
( ) .( )

.( )

( )

( )

:

. ■





( )

( , )

( , ) ( , )

.

:

(% )

.

.( , )

.

.( , ) (% )

.

.( , ) (% )

( )

.

.( , )

:

( )

.

.( , ) (% )

.

( )

( )

.( , )

( )

.

.( , )

( )

⋮

-

( )

⋮

( )

							۲
/	/	/	/	/	/	/	۱
/	/	/	/	/	/	/	۲
/	/	/	/	/	/	/	۳
/	/	/	/	/	/	/	۴
/	/	/	/	/	/	/	۵
/	/	/	/	/	/	/	۶
/	/	/	/	/	/	/	۷

'	'	'	'	'	'	'	'		
'	'	'	'	'	'	'	'		
'	'	'	'	'	'	'	'		
'	'	'	'	'	'	'	'		
'	'	'	'	'	'	'	'		
'	'	'	'	'	'	'	'		
'	'	'	'	'	'	'	'		
'	'	'	'	'	'	'	'		
'									

( )

( , )

( , ) ( , )

:

( )

.( , )





■

■

■

( , )

"( )

"

( )

.( )

"

"

"

"

“

”( )

( )

“

“

“

“

.

( , )

( )

“

“

( )

( )

( )

( )

( )

.

"

( )

"

.

( )

.

":

"

.

"

" "

"

( ) ( )

.



'	'								
'	'	'	'	'	'	'			
'	'	'	'	'	'	'			
'	'	'	'	'	'	'			
'	'	'	'	'	'	'			
'	'	'	'	'	'	'			
'									

( )

( , ) ( , )

.

:

.( , )

( )

( )

.( , )

( )

.( , )

( )

.( , )

:

( )

( )

( , )

( )

( )

.( , )

-

:

( )

:





( )

( , ) ( , )

.

:

.

.( , ) ( % )

:

.

.( , ) ( % )

.

.( , ) ( )

.

.( , ) ( )

.

.( , ) ( )

:

.

( )

( )

.( , )

.( , )

( )

( )

( ) ( )

:

.

.

.

.

.

.

.

.

.( ) ( )

"

"

( )

.

"

"

( )

.

"

( )

"

.

"

"

.

.

"

( )

( )

"

" ( ) "

% )

. ( % ) (

"

" "

. ( ) ( ) "

.

:

( )

:

) -

T-Test (

)

( ) (

( , )

( , )

. ( , )

( , )

( )

,	,		,	,			
			,	,			
,	,	,	,	,			
			,	,			
,	,		,	,			
			,	,			
,	,		,	,			
			,	,			

( , )

( , )

( , )

( , )

·

:( - ) -

T-Test ( )

( )

( )

( )

'	'		'	'			
			'	'			
'	'		'	'			
'	' -		'	'			
			'	'			
٠,٠٢٤	٢,٢٩		'	'			
			'	'			

( , )

( , .02 )

.

:

-

( )

(

)

)

(

( )

'	'		'	'			
			'	'			
'	' -		'	'			
			'	'			
'	'		'	'			
			'	'			
'	1,0.		'	'			
			'	'			

:

)

-

(

( )

.

( )

/	/	/		/		
		/		/		
/	/	/		/		
		/		/		
/	/	/		/		
		/		/		
/	/	/		/		
		/		/		

:

.



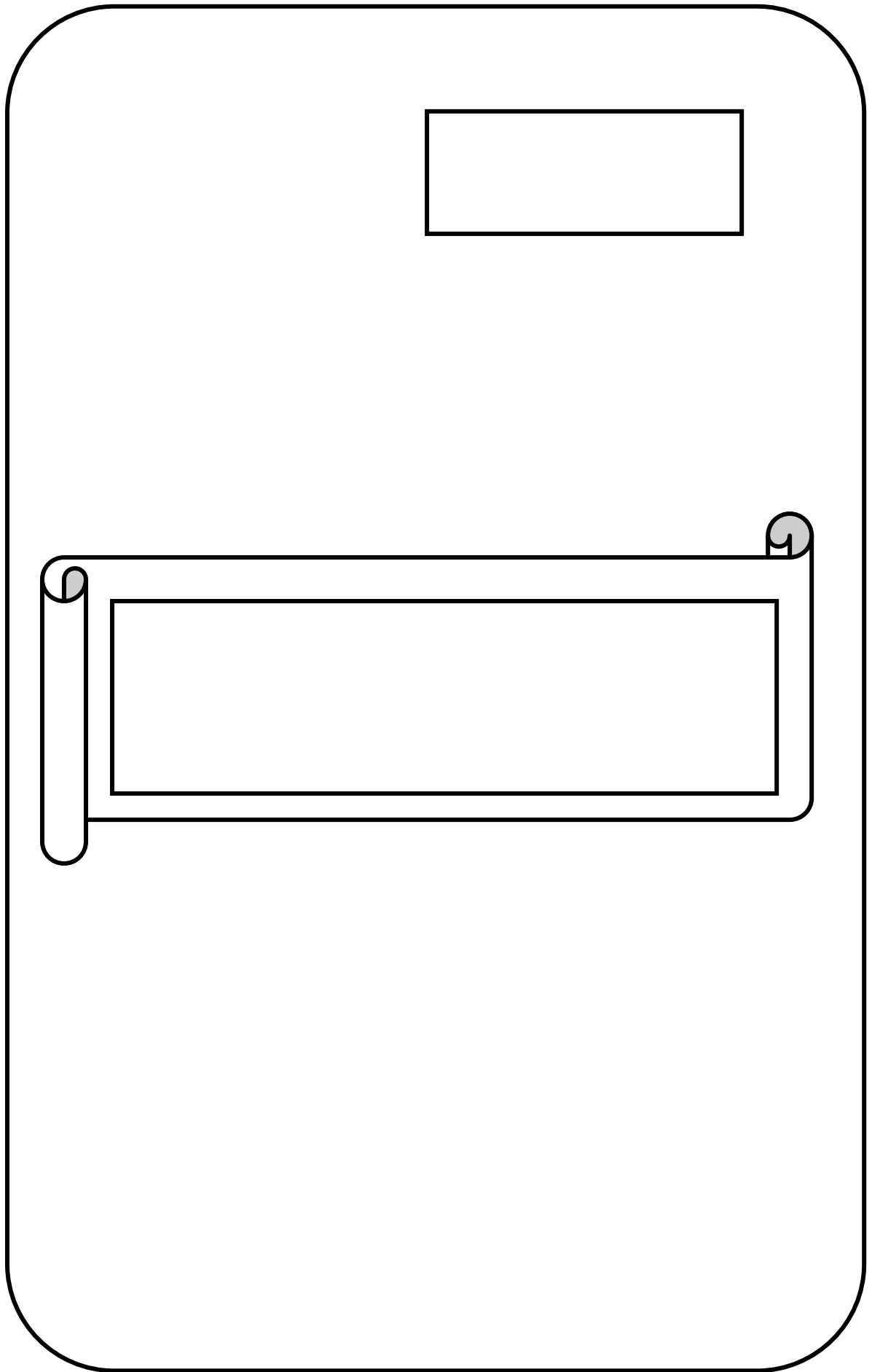
( , )

.

.

( , )

.



.

( )

.

.

.

.

.

.

.

.

.

.

.

.

)

(

( )

( )

)

( )

.(

( )

.

.

.

:

.

:

( , )

( , )

.( , )

:

.

.

.

.

.( , ) ( , )

:

( , )

.( , ) ( , )

:

( )





.

.

.

.

.

.

.

.

.

.

.

.

.

.

.

.

.

.

.

.

.

.

.

.

.

.

.

.

.

.

.

.

.

)

(

:

.

.

.

.

.

.

.

.

.

.

.

.

.

•

•

•

•

.

( )

.

•

•

•

•

•

•

•

•

•

•

•

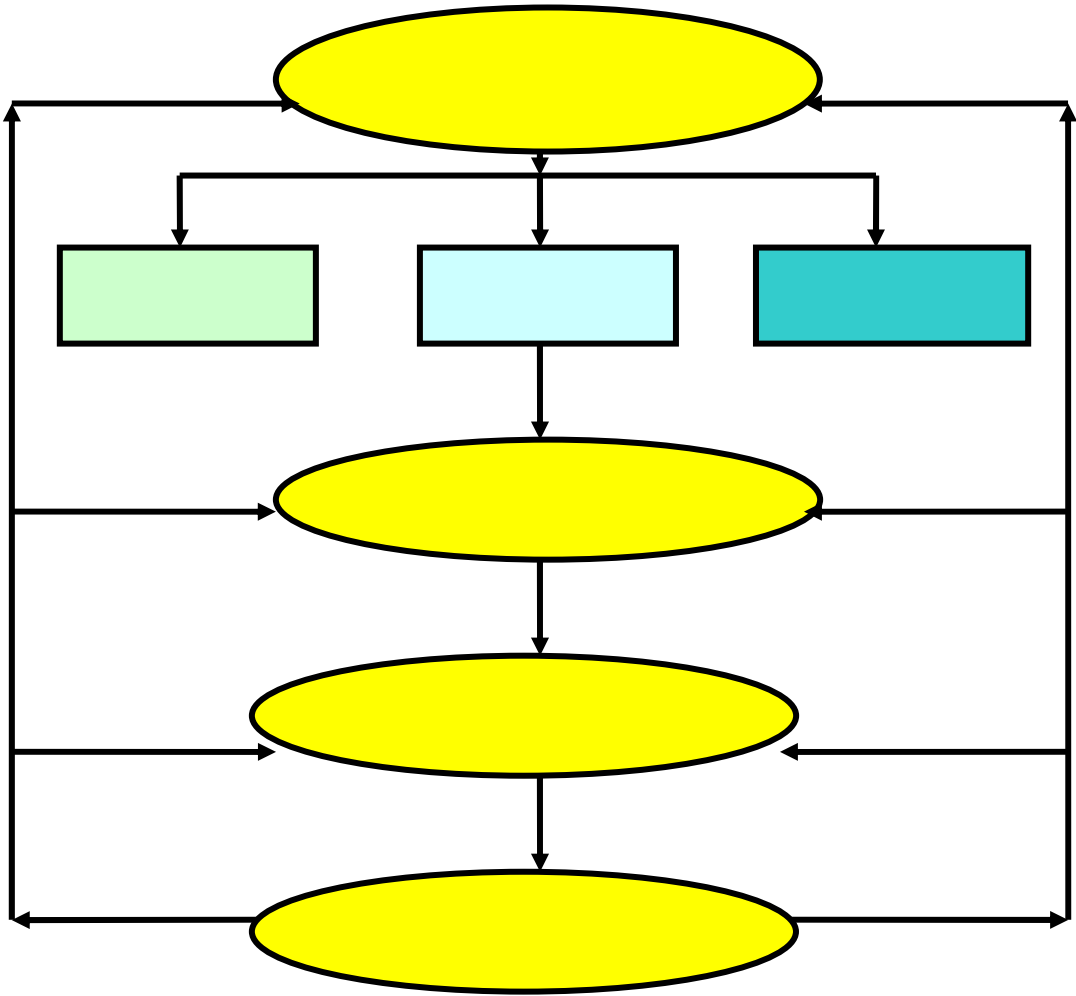
•

•

•

•

( )



:

:

( )

.

.

.

.

.

.

.

.

.

.

.

.

.

.

.



■

.

■

.

■

.

•

•

.

•

•

.

.

.

.

.

.

.

.

.

.

.

.

.

.





( )



.

.

.

.

.

.

.

.

.

.

.

.

.

.

.

.

.

.

.

.

.

.

.

.

.

.

.

.

.

.

.

.

.

. ( )

•  
•

•  
•

•

•

•

•

•

•

•

•

•

•

.

.

.

.

.

.

.

.

.

.

.

.

•

•

.

.

.

.

( )

.

.

.













.

.

.

.

.

.

.

.

.

.

.

.

.

.

.

.

.

.

/

.

-

.

.

.

.

.

:

.

.

:

.

:

.

.

:

.

.

:

.

.

( )

.

.

( )

.

.

.

.

.

.

.

.

.

.



:

:

1. ACAD, Supporting Students or Selling Access?. Educational Leadership, issue 15, November 1998.
2. Aidman, Amy. Advertising in the Schools. ERIC Digest. Urbana, Illinois: ERIC Clearinghouse on Elementary and Early Childhood Education, 1995. ED 389473.
3. Clark, Kathleen, A public secondary school model to Access private-sector funding, A Dissertation Presented to Pepperdine University, 2002.
4. Clark, Robert, Components of selected public-private partnerships to build new schools in California, A Dissertation Presented to University of la verne, 2002.
5. Giroux, H. Education incorporated? Corporate culture and the challenge of schooling. Educational Leadership, 1998, October, 56(2).
6. Hernandez, Alex and Mahoney, Matthew, Is the Private Sector Qualified to Reform Schools, education week, September 18, 2002.
7. Karpatkin, Rhoda H., and Anita Holmes, Making Schools Ad-Free Zones. Educational Leadership 1995 53(1, Sep).
8. Lumsden, Linda and Hertling, Elizabeth, Trends and Issues: Relationships With Community, 2002, eric.www.uoregon.edu/ Trends issues.
9. Merenda, Daniel, Partnership 2000: A Decade of Growth and Change, The National Association of Partners in Education 2000.
10. Molnar alex, Morales Jennifer, The Third Annual Report on Trends in schoolhouse commercialism, School of Education University of Wisconsin-Milwaukee, September 2000.
11. Molnar, Alex. Sponsored schools and commercialized classrooms: Schoolhouse commercializing trends in the `1990,s. Milwaukee, WI: University of Wisconsin-Milwaukee 1998, August.

12. Moursund, D.G. Obtaining resources for technology in education funds. 2002, [www. Uoregon.edu](http://www.uoregon.edu).
13. Shaul, Marnie S. Public Education: Commercial Activities in Schools. Report to Congressional Requesters. Washington, D.C.: United States General Accounting Office, 2000.
14. Weisman, Jonathan, PTA Principles on Corporate Support Fail To Win Over Other Organizations. Education week , July 31,1991,[www.edweek.org](http://www.edweek.org)
15. Fox, R.F. Harvesting minds: How TV commercials control kids. Westport, CT,1996.: Praeger Publishers.
16. Johnston, J. Channel One: The dilemma of teaching and selling. Phi Delta Kappan, 1995,76(6), 437–442.
17. Mason, Robert D., Statistical Techniques In Business and Economics, Richard D. Irwin Inc., Homewood IL, June 1996.







سَمِ اللّٰهُ الرَّحْمٰنُ الرَّحِیْمُ

/

/

:

"

"

:

.

.

.

.

.

.

.

.

.






:( )

.....  
.....

:



:( )

.....  
 .....  
 .....  
 .....  
 .....

:

.....  
 .....  
 .....





سَمِ اللّٰهُ الرَّحْمٰنُ الرَّحِیْمُ

/

/

:

"

"

:

.

.

.

.

.

.

.

.

.






:( )

.....  
 .....  
 .....

:






/

/

:

.

:

.

.

.

.

.

.

.

.

.













/

/

:

.

:

.

.

.

.

.









